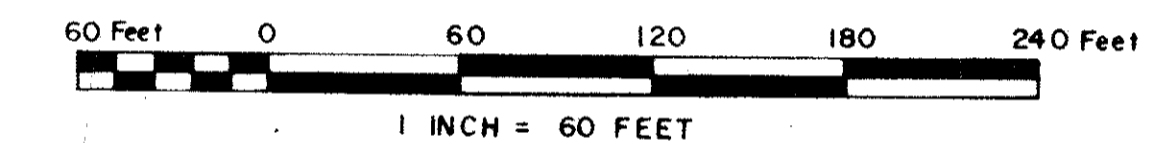
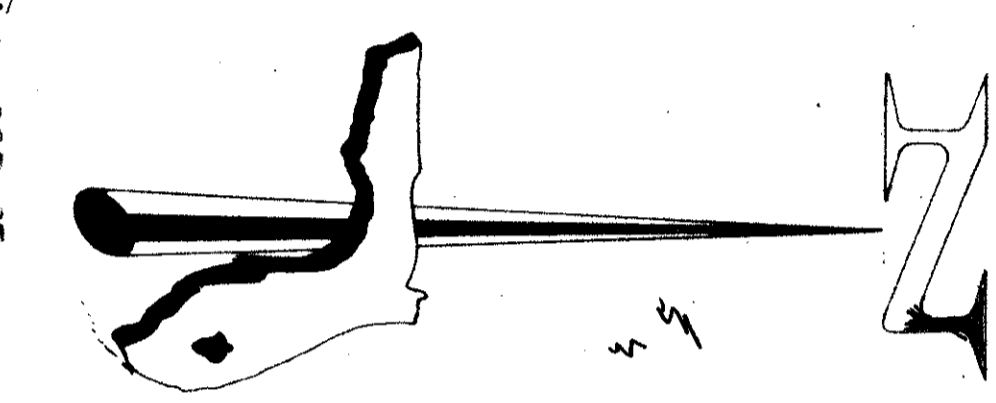
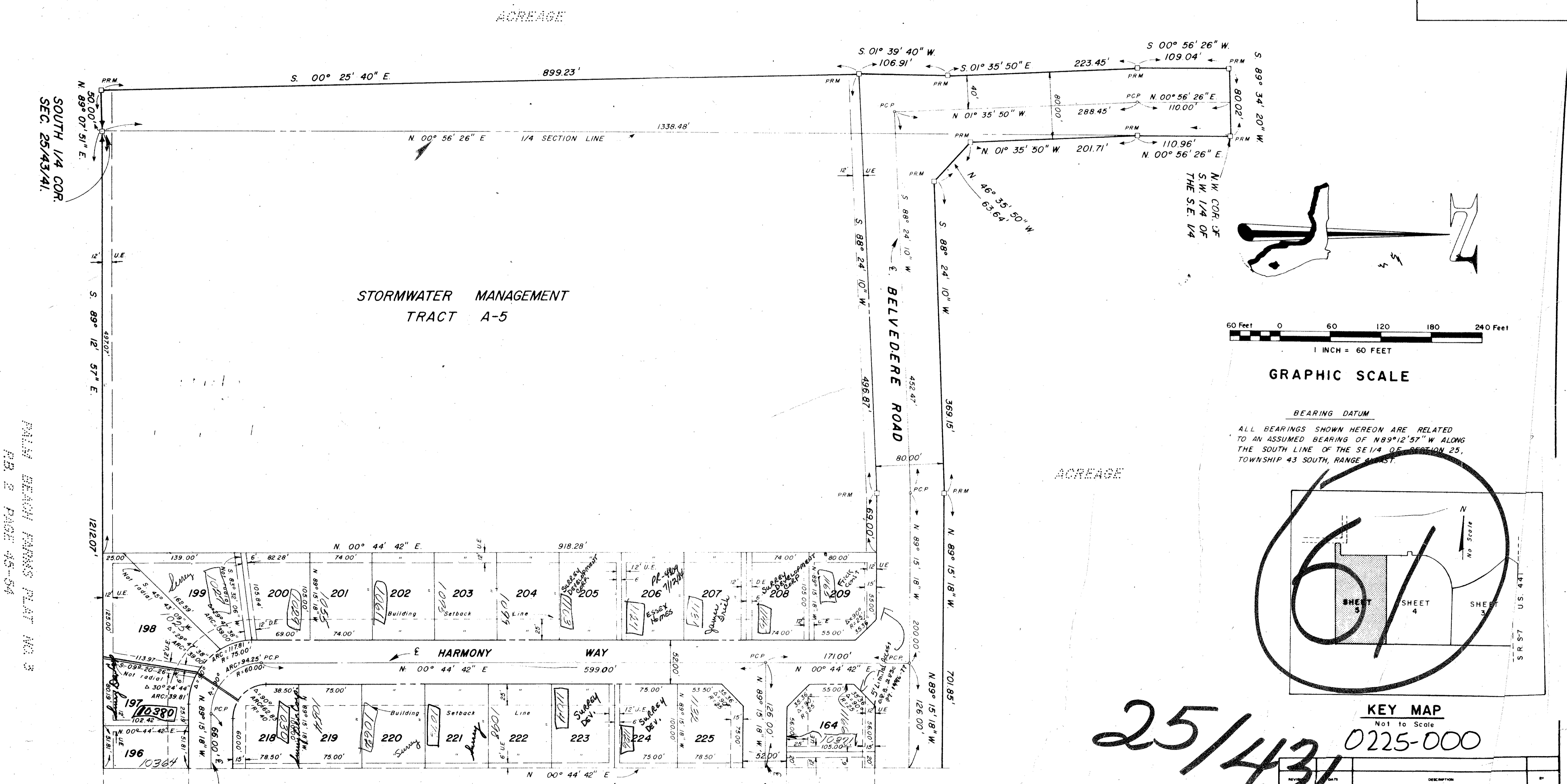


# COUNTERPOINT ESTATES PLAT No. 1

## IN SECTION 25, TOWNSHIP 43 SOUTH, RANGE 41 EAST, PALM BEACH COUNTY, FLORIDA

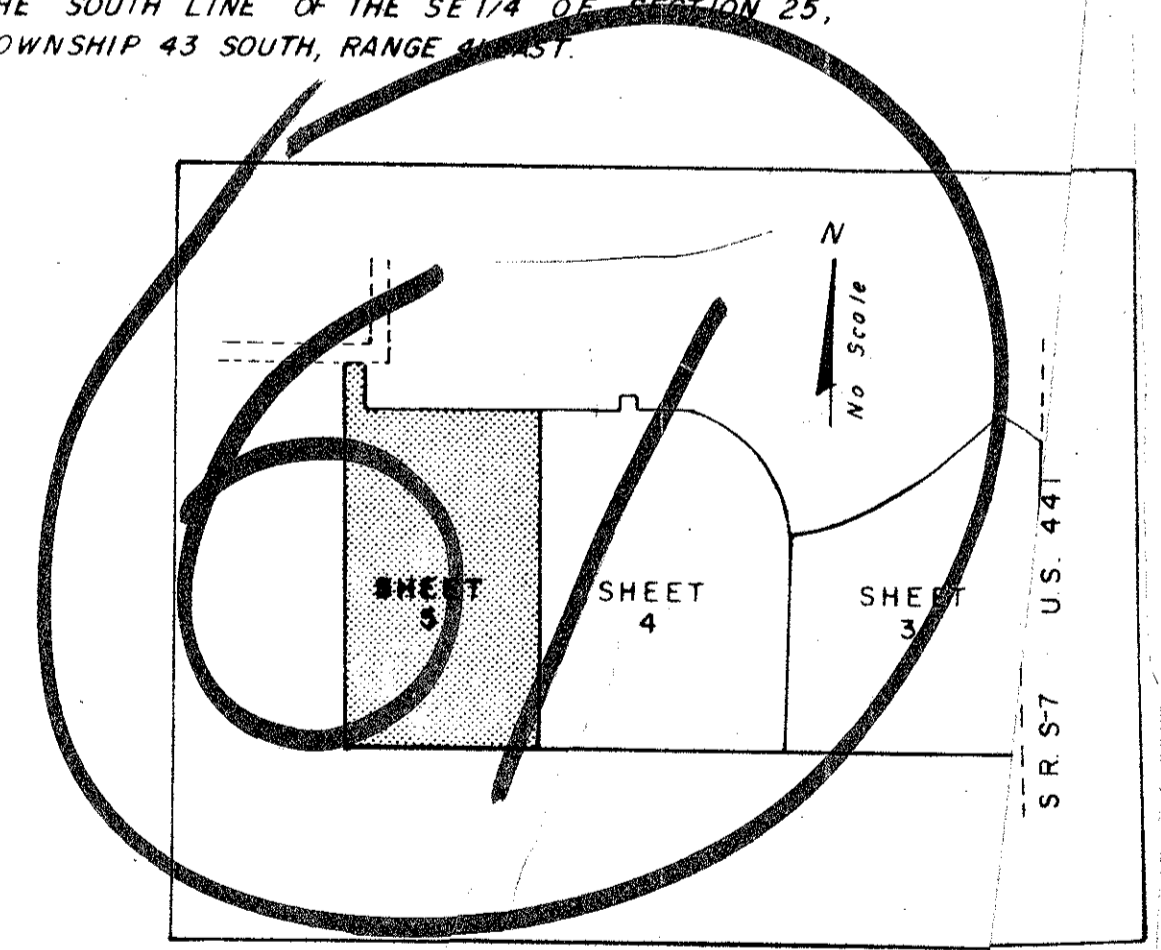
### MARCH 1977



GRAPHIC SCALE

BEARING DATUM

ALL BEARINGS SHOWN HEREON ARE RELATED TO AN ASSUMED BEARING OF N89°12'57" W ALONG THE SOUTH LINE OF THE SE 1/4 OF SECTION 25, TOWNSHIP 43 SOUTH, RANGE 41 EAST.



KEY MAP

Not to Scale  
0225-000

25/43/141

- NOTES**
1. NO BUILDING OR ANY KIND OF CONSTRUCTION OR TREES SHALL BE PLACED WITHIN EASEMENTS.
  2. DRAINAGE EASEMENT TAKES PRECEDENCE OVER UTILITY EASEMENTS.
  3. MAINTENANCE ACCESS RIGHTS ARE GRANTED OVER ALL TRACTS SHOWN HEREON FOR THE PURPOSE OF MAINTENANCE OF UTILITIES.

- LEGEND**
- U.E. INDICATES POWER AND/OR TELEPHONE EASEMENT
  - D.E. INDICATES 12' DRAINAGE EASEMENT
  - W.S. INDICATES 12' WATER AND/OR SANITARY SEWER EASEMENT
  - PCP INDICATES PERMANENT CONTROL POINT
  - PRM INDICATES PERMANENT REFERENCE MONUMENT

REVISION	DATE	DESCRIPTION	BY

R. GONZALEZ AND COMPANY, INC.  
CONSULTING ENGINEERS  
FLORIDA SURVEYING & MAPPING, INC.  
REGISTERED LAND SURVEYORS  
NORTH PALM BEACH, FLORIDA

**COUNTERPOINT ESTATES PLAT NO. 1**

APPROVED: [Signature] DATE: 10/5/76

# COUNTERPOINT ESTATES